



Hi-Tech Systems

1190 N. Del Rio Pl., Ontario, CA 91764

www.hitechpolyurea.com

800-454-5530

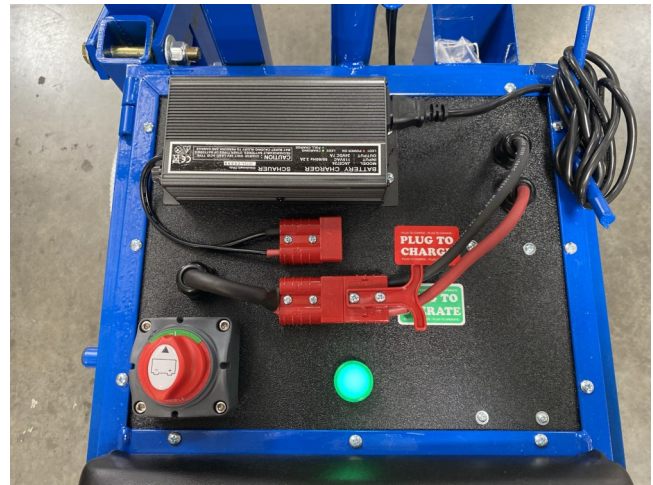
POWER SHAVER MANUAL

SAFETY

1. Become completely familiar with the Hi-Tech Power Shaver before operation.
2. Keep hands/clothing free from all moving chains, gears and moving parts.
3. Keep clear of the razor blade at the head of the machine.
4. Never alter the machine from its original condition for safety purposes.
5. Always start slow and get used to the specific floor you are working on before ramping up to full speed.
6. Be aware of your surroundings, and always be looking for other people, equipment or structures. Install blade only when ready to start shaving joints. Remove blade whenever transporting or moving on the jobsite.

OPERATION

1. Check all connections and ensure batteries are charged before using. To charge batteries, first turn the charger on using the switch located next to the plug. Red light indicates power is on, yellow indicates charging and green is fully charged. Attach quick connect to port labeled “plug to charge” and charge until full. Charger will automatically shut off when battery is fully charged. To operate the shaver, attach to quick connect labeled “plug to operate” and turn switch to green on position.



2. Throttle and directional controls are located on the handle bar. Use rocker switch on the left to choose forward or reverse. The thumb throttle on the right side of the handle bar is variable speed. Slowly press to engage the motor. The more pressure applied, the faster the shaver will move. Stop by releasing the throttle. Always come to a complete stop before switching directions.



3. Use grease fittings to apply grease to pillow bearings and front tire axels. Apply as needed for smooth operation.



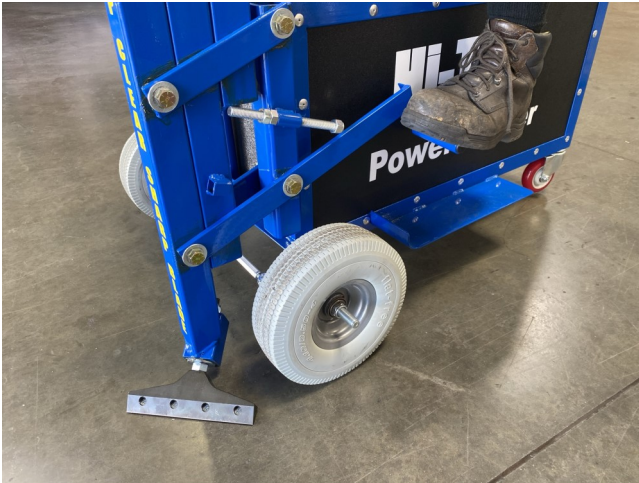
4. To adjust the chain tension, use a flat head screw driver to push down slightly on the sprocket shaft and a 15/16 wrench to loosen the nut. Chain should be fairly taut with minimal play.



5. Tire pressure should be 35 psi depending on conditions. Lower pressure slightly for slick floors.



6. Use foot lever to raise and lower the shaver head. To lock shaver head in raised position, slide locking bolt forward while completely raised. Once locked, it is safe to install or change blades using a #3 Philips driver, extra screws are provide with machine. Do not install blades until you are ready to start shaving joints. Always remove blade before transporting or moving on jobsite.



7. When shaving joints, position shaver behind the fully cured joint. Make sure blade is on the floor and aligned with joint then slowly engage thumb drive. Increase speed as desired and take care to keep the power shaver aligned with the joint. The power shaver will cut through regular joints and joint intersections seamlessly. Rotating the shaver head every 2000-3000 feet will prolong the life of the blade.



CLEANING/MAINTENANCE

1. Wipe down machine.
2. Grease pillow bearings on the axle, charge batteries, check tire pressure and oil chain.

SPECIFICATIONS

1. Weight: 350 lbs. Length: 47" Width: 30" Height 36"
2. Motor: 1/2 HP 124 in.-lbs Torque, DC Gear motor
3. Low Voltage Regenerative DC Drive
4. Wheels:
 - Front - 10" x 3.5" Non Marring Flat Free tires
 - Center - 18.5" x 8.5" Non Marring Balloon Cushion tire
 - Rear - 4" Hard Urethane Wheels for Stabilization
5. Shaver head: 8" Hi-Tech swivel head mounted on an axle with bearings
6. 24 volt system: (2) 12 volt, 105 amp deep cycle batteries, 24 volt 7 amp charger with quick connects

SIX MONTH LIMITED WARRANTY

Hi-Tech Systems (HTS) will repair or replace, at its expense and its option, any part of the Power Shaver, which in the course of normal use has proven to be defective in workmanship or material, provided that the customer returns the product prepaid to HTS within six (6) months from the date of the original purchase and provides HTS with a reasonable opportunity to verify the alleged defect by inspection. Parts may need to be sent to the manufacturer for inspection and repair or replacement. HTS will not be responsible for any asserted defect, which has resulted from misuse, abuse or repair or alteration made or specifically authorized by anyone other than HTS. Under no circumstances will HTS be liable for incidental or consequential damages resulting from defective products. This warranty is HTS's sole warranty and sets forth the customer's exclusive remedy, with respect to defective products; all other warranties, express or implied, whether or merchantability, fitness for purpose, or otherwise, are expressly disclaimed by HTS.